

JACKSON CO.

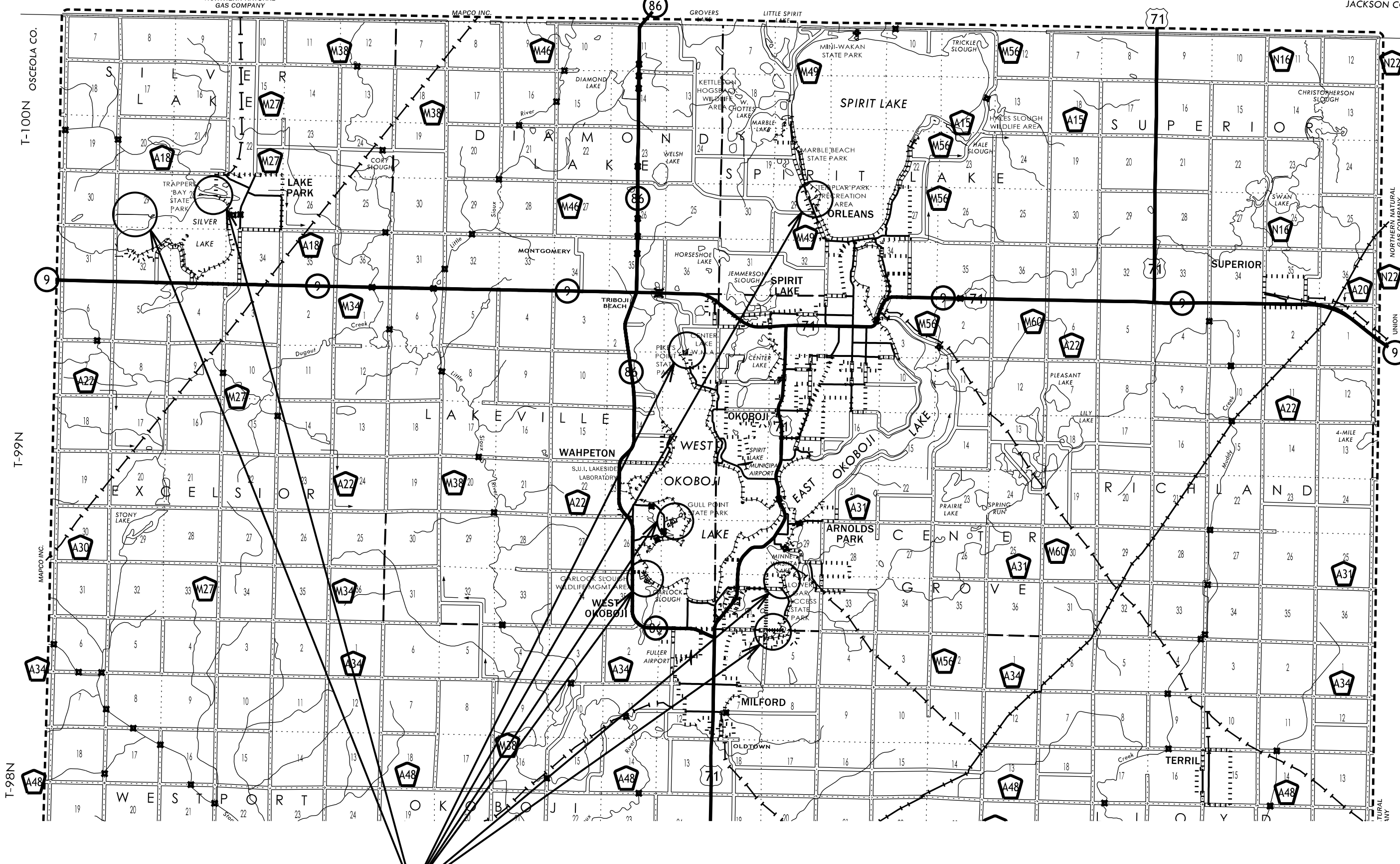
R-38W

R-37W

R-36W

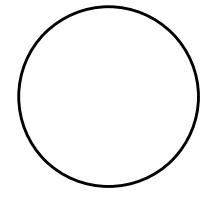
R-35W

JACKSON CC



PROJECT LOCATIONS

CONSULTANT:



IOWA DEPARTMENT OF NATURAL RESOURCES
 ENGINEERING SERVICES - CENTRAL OFFICE
 6200 PARK AVE. STE 200, DES MOINES, IA 50321



PROJECT LOCATION MAP
 ROAD MAINTENANCE FOR:
 DICKINSON COUNTY STATE PARKS AND WILDLIFE AREAS
 DICKINSON COUNTY

NO.	DATE	REVISION

DRAWN BY: PROJECT NUMBER:
 25-01-30-05
 CHK'D BY: DATE:
 May 19, 2026

SHEET NO:
A.02

ESTIMATE REFERENCE INFORMATION

ITEM NO.	DESCRIPTION
37	Reshaping Ditch A. Off-site disposal of material is the responsibility of the contractor. B. No payment for overhaul will be allowed. C. See Specification Section 2125.
38	Excavation, Class 13, Widen A. Off-site disposal of material is the responsibility of the contractor. B. No payment for overhaul will be allowed. C. Contractor responsible to remove and replace all signs impacted by shoulder widening. D. See Specification Section 2213.
39	Base Widening, 6" HMA A. See Specification Section 2213
40	Modified Subbase A. For HMA Paving and Shoulder Widening B. See Specification Section 2115.
41	Clearing and Grubbing A. Includes the removal and disposal of trees as shown in the plans and as directed by the DNR Field Engineer. B. Off-site disposal is the responsibility of the contractor. No burning or burying is allowed in the park. C. Remove stumps, including roots. In areas with construction, all trunks and roots that have a diameter of 1 inch or larger shall be grubbed out to a depth of at least 3 feet below ground surface. In areas outside of the construction, trunks and roots shall be grubbed to a depth of at least 12 inches below the ground surface. D. See Specification Section 2101.
42	Traffic Control A. Includes furnishing, erecting and maintaining all barricades, signs, pilot cars, and/or flaggers needed to complete the work under traffic per Iowa DOT standard traffic control details. B. Traffic shall be maintained at all times and shall be the contractor's responsibility. All signage shall be erected and maintained by the Contractor. C. See Specification Section 2528.

GENERAL NOTES

Verify actual locations and elevations with DNR Engineer.

All work shall conform to and be performed in accordance with all applicable codes and ordinances.

The contractor shall visit the site and inspect the project area and thoroughly familiarize themselves with the actual job conditions prior to bidding and the start of work. Failure to visit the project site shall not relieve the contractor from performing the work in accordance to the plans, specification, special provisions and contract.

The contractor shall verify, at the site, all dimensions and conditions shown on the plans and shall notify the DNR Engineer of any discrepancies, omissions, and/or conflicts prior to proceeding with the work.

It shall be the contractor's responsibility to provide waste areas or disposal sites for excess material (excavated material or broken concrete) which is not desirable to be incorporated into the work involved on this project. No payment for overhaul will be allowed for material hauled to these sites. No material shall be placed within the right-of-way, unless specifically stated in the plans or approved by the DNR Engineer.

The contractor shall not disturb desirable grass areas and desirable trees outside the construction limits. The contractor will not be permitted to park or service vehicles and equipment or use these areas for storage of materials. Storage, parking and service areas will be subject to the approval of the DNR Engineer.

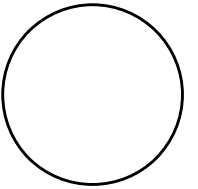
Unless otherwise directed by the Plans, Specifications, or the DNR Engineer, all trees with a trunk diameter of three inches or greater when measured at breast height, shall be felled between October 1st and March 31st. Brush and debris removal is not restricted by this note.

Where utilities and fixtures are shown as Existing on the plans or encountered within the construction area, it shall be the responsibility of the contractor to notify the DNR Engineer of those utilities prior to the beginning of any construction. The contractor shall be afforded access to these facilities for necessary modification of services. Underground facilities, structures and utilities have been plotted from available surveys and records and therefore their locations must be considered approximate only. It is possible there may be others, the existence of which is presently not known or shown. It is the contractor's responsibility to determine their existence and exact location and to avoid damage thereto. No claims for additional compensation will be allowed to the contractor for any interference or delay caused by such work.

The contractor shall shape graded area to maintain surface drainage. All elevations are to finish grade.

The contractor is expected to have materials, equipment, and labor available on a daily basis to install and maintain erosion control features on the project. This may involve seeding, silt fence, rock ditch checks, silt basins or silt dikes.

CONSULTANT:



IOWA DEPARTMENT OF NATURAL RESOURCES
ENGINEERING SERVICES - CENTRAL OFFICE
6200 PARK AVE, STE 200, DES MOINES, IA 50321



QUANTITIES AND GENERAL INFORMATION

ROAD MAINTENANCE FOR:
DICKINSON COUNTY STATE PARKS AND WILDLIFE AREAS
DICKINSON COUNTY

NO.	BY	REVISION

DRAWN BY: PROJECT NUMBER:
25-01-30-05

CHK'D BY: DATE:
May 19, 2026

SHEET NO:

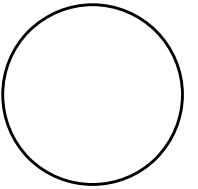
C.02

PARKING LOT HMA FULL-DEPTH FINISH PATCHES					
LOCATION	LENGTH (FT)	WIDTH (FT)	FULL DEPTH PATCH (SY)	FULL DEPTH PATCH LENGTH > 50' (SY)	NOTES
6302+80	20	52	115.6		
			115.6		

EXISTING ROCK PARKING LOTS				
LOCATION	BLADE/ SHAPE LENGTH (FT)	WIDTH (FT)	ROADSTONE (TON)	TYPE
2008+40	135	37	88	3" Class A
2010+00	80	13	18	3" Class A
2016+50	10	38	14	3" Class A
2019+00	60	20	28	3" Class A
3100+50	114	20	27	2" Class A
3101+50	35	20	8	2" Class A
3203+25	100	20	23	2" Class A
7102+00	225	20	53	2" Class A
	849		314	

PARKING LOT PAVEMENT MARKINGS			
LOCATION	PARKING LINES (WHITE) @ 1.00 (STA)	ADA PARKING (COUNT)	NOTES
1002+25	1.20		
1013+30	1.20		
3101+25	9.40	2	
4008+75	12.40	2	
4201+00	22.60		
5020+50	2.00		
6302+00	7.60		
7010+50	1.80		
7103+00	6.40		
7400+75	24.50		
Unfactored Length	86.70		
Factored Length	86.70		

CONSULTANT:



IOWA DEPARTMENT OF NATURAL RESOURCES

ENGINEERING SERVICES - CENTRAL OFFICE
6200 PARK AVE, STE 200, DES MOINES, IA 50321



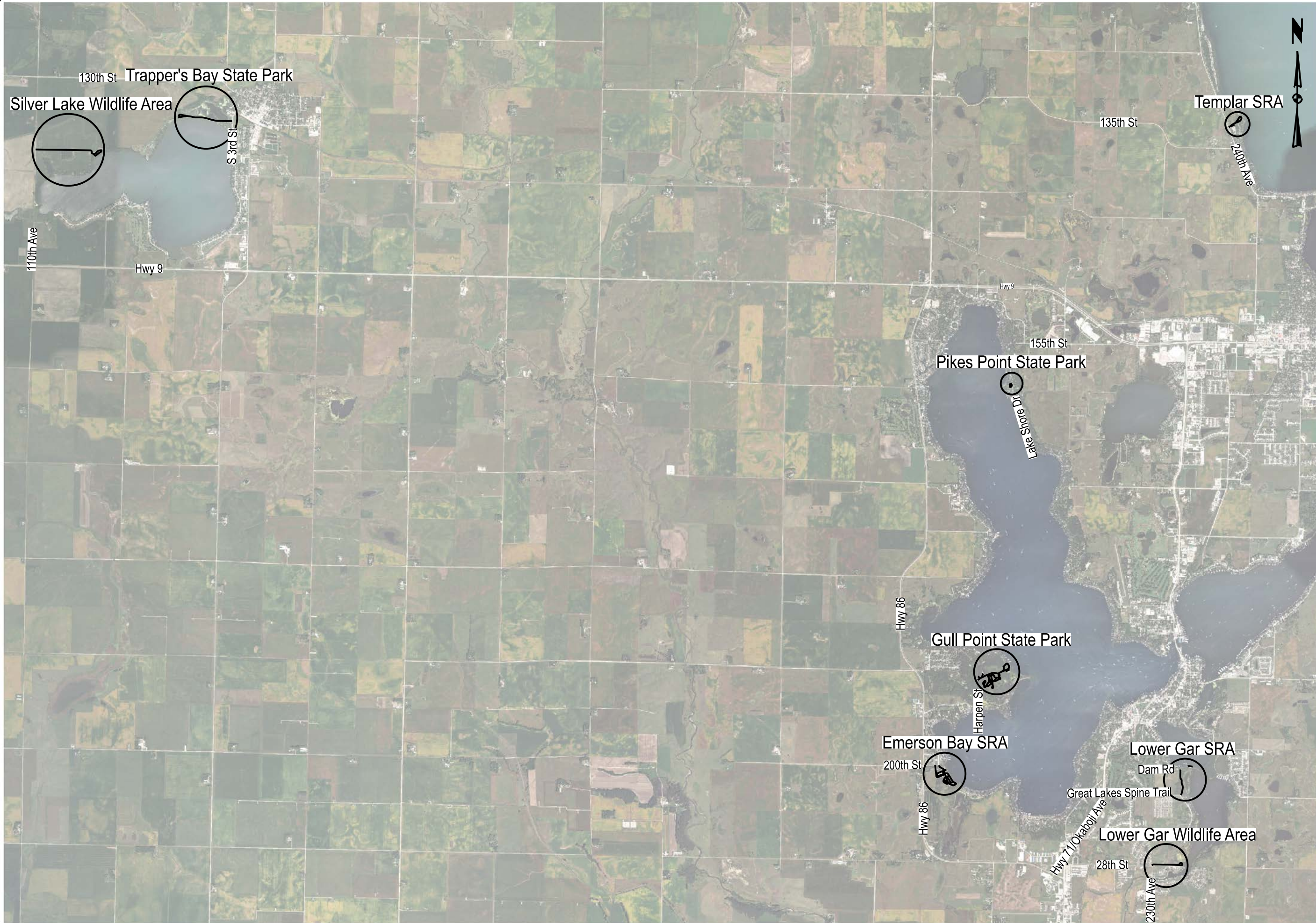
QUANTITIES AND GENERAL INFORMATION

ROAD MAINTENANCE FOR:
DICKINSON COUNTY STATE PARKS AND WILDLIFE AREAS
DICKINSON COUNTY

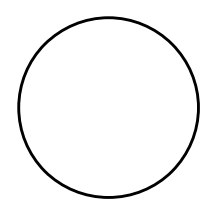
NO.	BY	REVISION

DRAWN BY: PROJECT NUMBER:
25-01-30-05
CHK'D BY: DATE:
May 19, 2026
SHEET NO:

C.06



CONSULTANT:



IOWA DEPARTMENT OF NATURAL RESOURCES

ENGINEERING SERVICES - CENTRAL OFFICE
6200 PARK AVE, STE 200, DES MOINES, IA 50321



SITE PLAN

ROAD MAINTENANCE FOR:

DICKINSON COUNTY STATE PARKS AND WILDLIFE AREAS

DICKINSON COUNTY

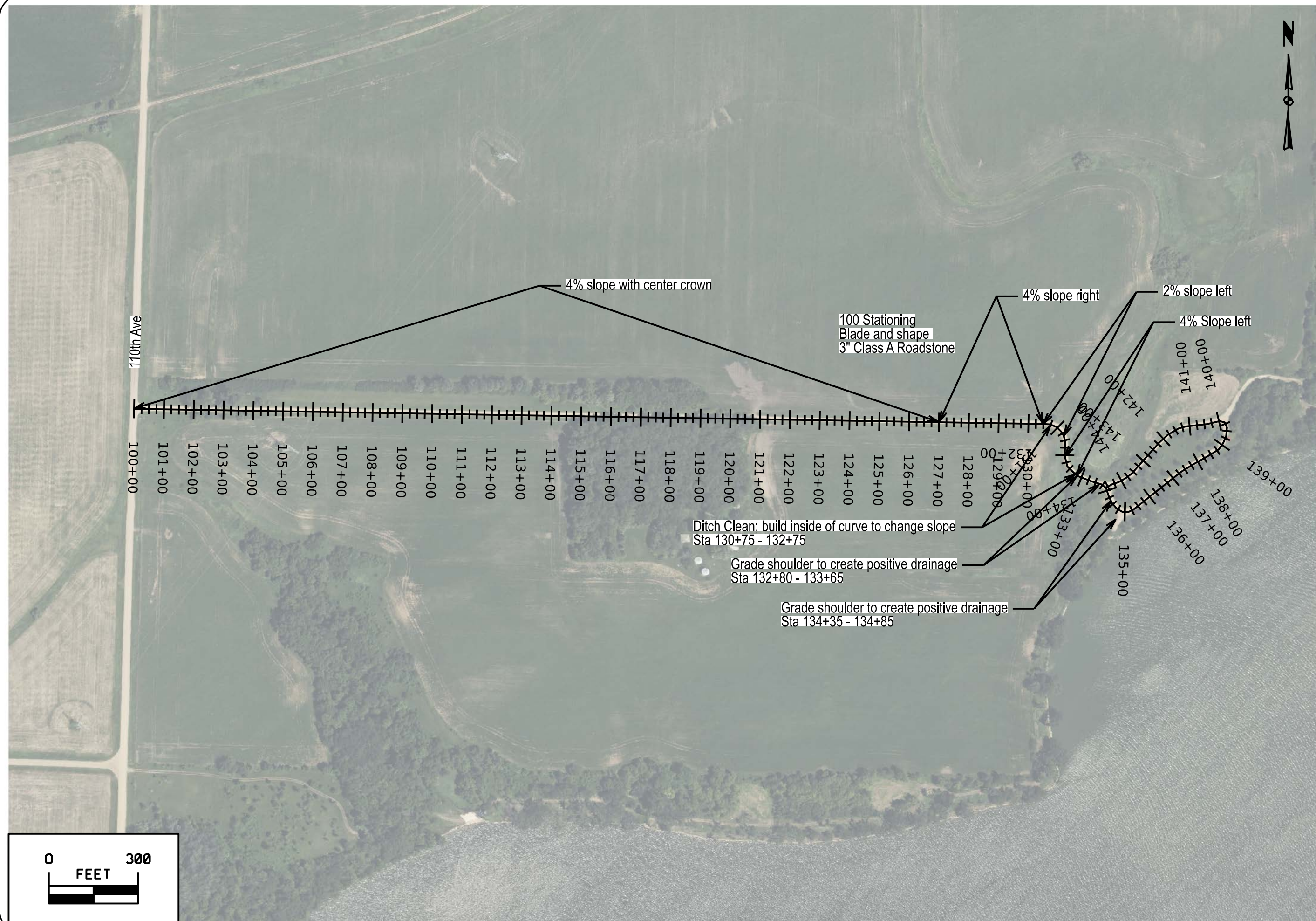
NO.	BY	REVISION

DRAWN BY: PROJECT NUMBER:
25-01-30-05

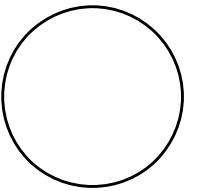
CHK'D BY: DATE:
May 19, 2026

SHEET NO:

D.01



CONSULTANT:



IOWA DEPARTMENT OF NATURAL RESOURCES

ENGINEERING SERVICES - CENTRAL OFFICE
6200 PARK AVE, STE 200, DES MOINES, IA 50321



SILVER LAKE WILDLIFE AREA SITE PLAN

ROAD MAINTENANCE FOR:
DICKINSON COUNTY STATE PARKS AND WILDLIFE AREAS

DICKINSON COUNTY
DICKINSON COUNTY

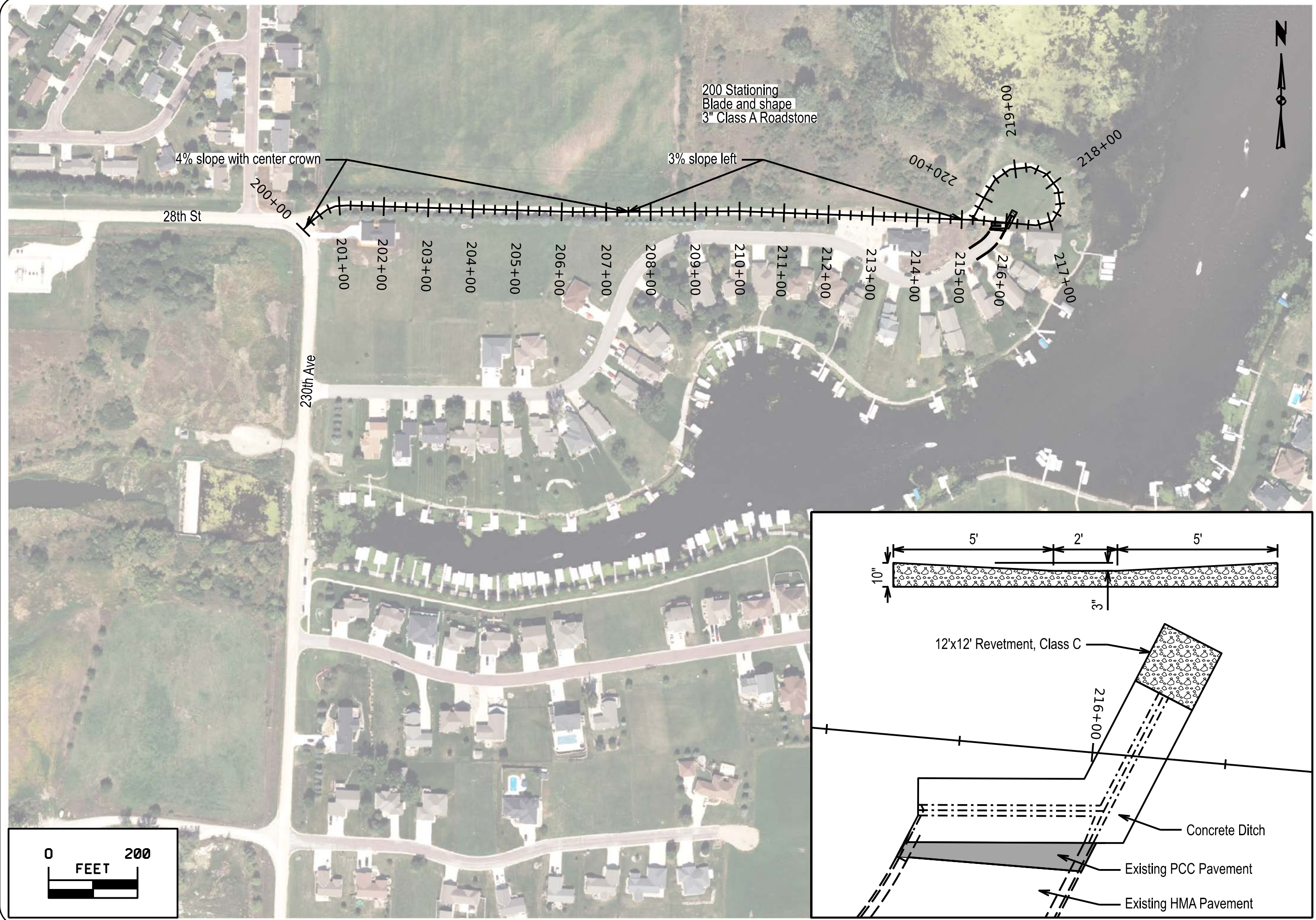
NO.	BY	REVISION

DRAWN BY: PROJECT NUMBER:
25-01-30-05

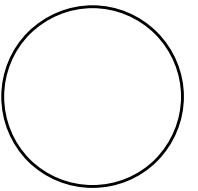
CHK'D BY: DATE:
May 19, 2026

SHEET NO:
D.02





CONSULTANT:



IOWA DEPARTMENT OF NATURAL RESOURCES

ENGINEERING SERVICES - CENTRAL OFFICE
6200 PARK AVE, STE 200, DES MOINES, IA 50321



LOWER GAR WILDLIFE AREA SITE PLAN

ROAD MAINTENANCE FOR:

DICKINSON COUNTY STATE PARKS AND WILDLIFE AREAS

DICKINSON COUNTY

NO.	BY	REVISION

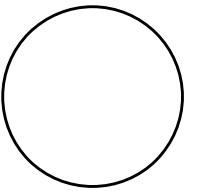
DRAWN BY: PROJECT NUMBER:
25-01-30-05

CHK'D BY: DATE:
May 19, 2026

SHEET NO: **D.03**



CONSULTANT:



**IOWA DEPARTMENT OF
NATURAL RESOURCES**

ENGINEERING SERVICES - CENTRAL OFFICE
6200 PARK AVE, STE 200, DES MOINES, IA 50321



TRAPPERS BAY STATE PARK SITE PLAN

ROAD MAINTENANCE FOR:

DICKINSON COUNTY STATE PARKS AND WILDLIFE AREAS

DICKINSON COUNTY

NO.	BY	REVISION

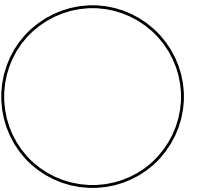
DRAWN BY: PROJECT NUMBER:
25-01-30-05

CHK'D BY: DATE:
May 19, 2026

SHEET NO:
D.05



CONSULTANT:



IOWA DEPARTMENT OF NATURAL RESOURCES

ENGINEERING SERVICES - CENTRAL OFFICE
6200 PARK AVE, STE 200, DES MOINES, IA 50321



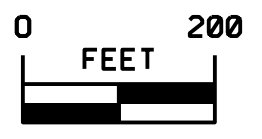
EMERSON BAY SRA SITE PLAN

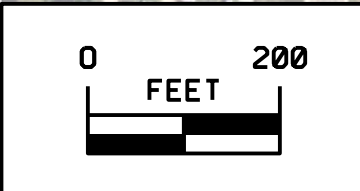
ROAD MAINTENANCE FOR:
DICKINSON COUNTY STATE PARKS AND WILDLIFE AREAS
DICKINSON COUNTY

NO.	BY	REVISION

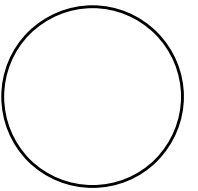
DRAWN BY: PROJECT NUMBER:
25-01-30-05
CHK'D BY: DATE:
May 19, 2026
SHEET NO:

D.10





CONSULTANT:



IOWA DEPARTMENT OF NATURAL RESOURCES
 ENGINEERING SERVICES - CENTRAL OFFICE
 6200 PARK AVE, STE 200, DES MOINES, IA 50321

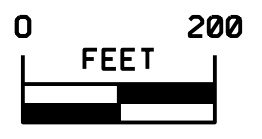


EMERSON BAY SRA SITE PLAN
 ROAD MAINTENANCE FOR:
 DICKINSON COUNTY STATE PARKS AND WILDLIFE AREAS
 DICKINSON COUNTY

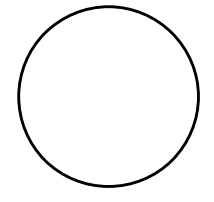
NO.	BY	REVISION

DRAWN BY: PROJECT NUMBER:
 25-01-30-05
 CHK'D BY: DATE:
 May 19, 2026
 SHEET NO:

D.11



CONSULTANT:



IOWA DEPARTMENT OF NATURAL RESOURCES
 ENGINEERING SERVICES - CENTRAL OFFICE
 6200 PARK AVE, STE 200, DES MOINES, IA 50321



EMERSON BAY SRA SITE PLAN

ROAD MAINTENANCE FOR:
 DICKINSON COUNTY STATE PARKS AND WILDLIFE AREAS
 DICKINSON COUNTY

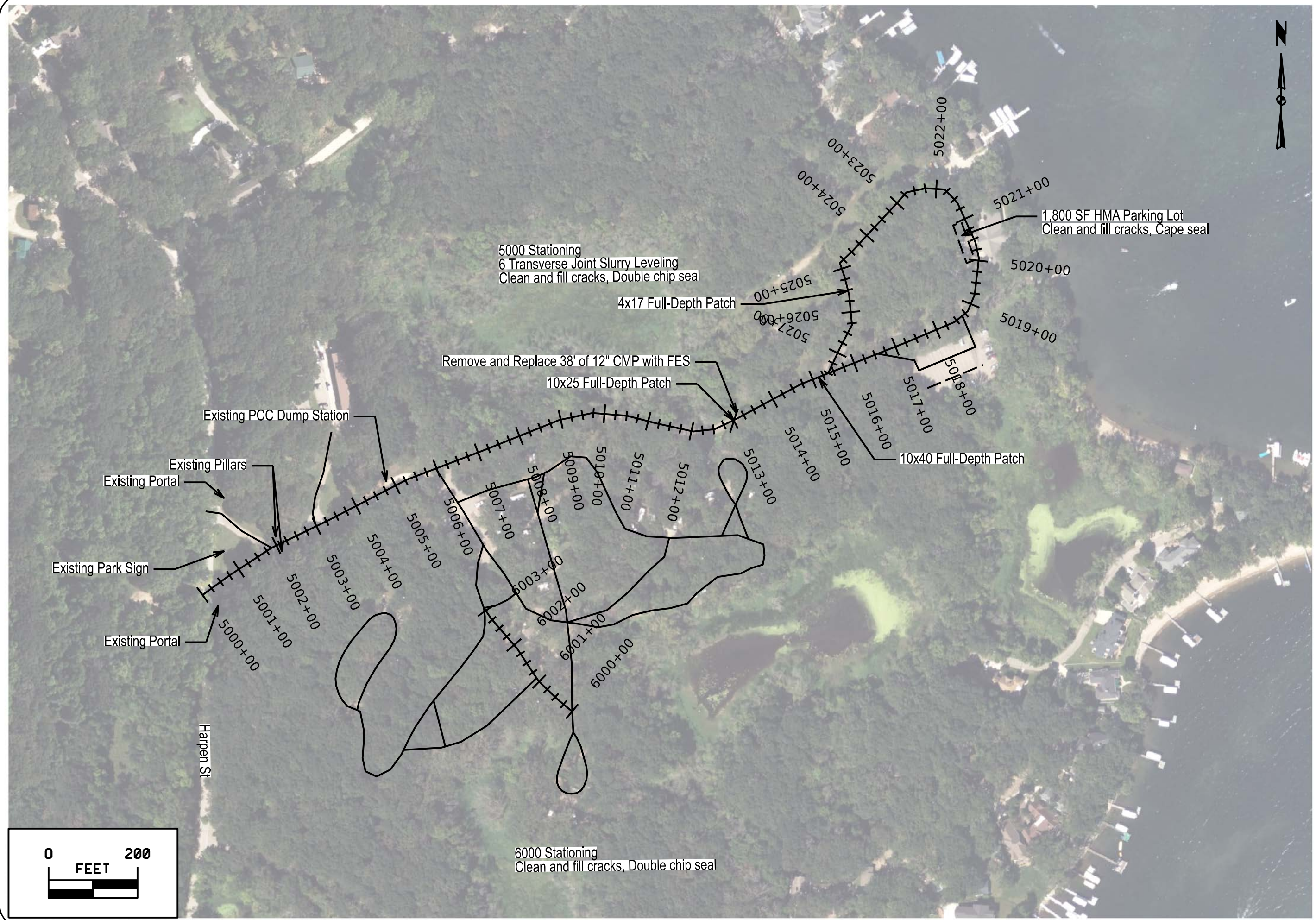
NO.	BY	REVISION

DRAWN BY: PROJECT NUMBER:
 25-01-30-05

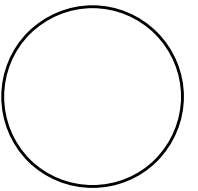
CHK'D BY: DATE:
 May 19, 2026

SHEET NO:

D.12



CONSULTANT:



**IOWA DEPARTMENT OF
NATURAL RESOURCES**

ENGINEERING SERVICES - CENTRAL OFFICE
6200 PARK AVE, STE 200, DES MOINES, IA 50321



GULL POINT STATE PARK SITE PLAN

ROAD MAINTENANCE FOR:
DICKINSON COUNTY STATE PARKS AND WILDLIFE AREAS

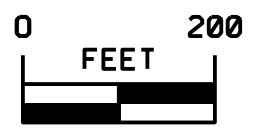
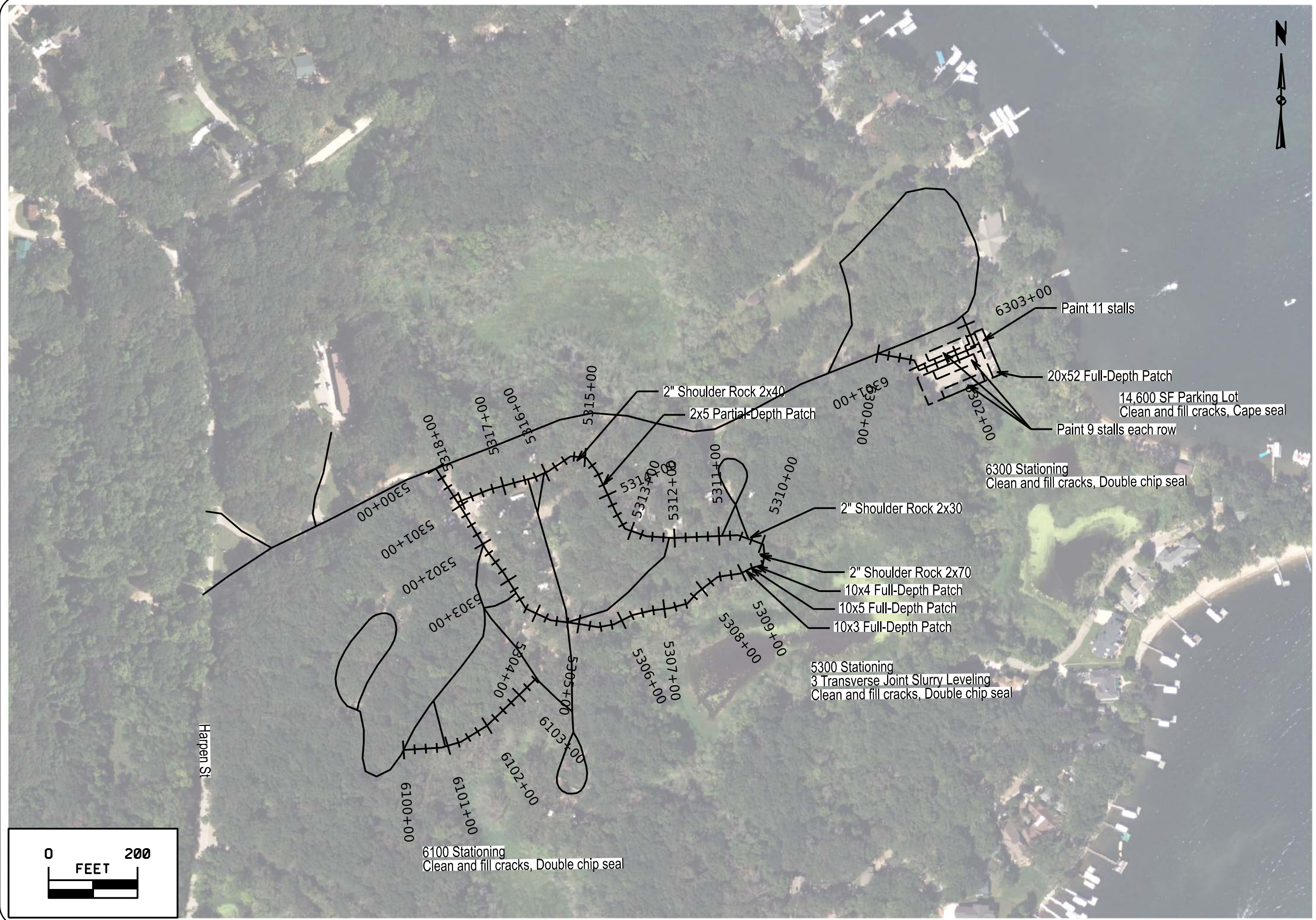
DICKINSON COUNTY

NO.	BY	REVISION

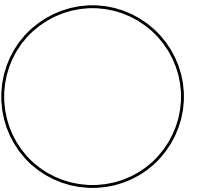
DRAWN BY: PROJECT NUMBER:
25-01-30-05

CHK'D BY: DATE:
May 19, 2026

SHEET NO:
D.13



CONSULTANT:



IOWA DEPARTMENT OF NATURAL RESOURCES

ENGINEERING SERVICES - CENTRAL OFFICE
6200 PARK AVE, STE 200, DES MOINES, IA 50321



GULL POINT STATE PARK SITE PLAN

ROAD MAINTENANCE FOR:
DICKINSON COUNTY STATE PARKS AND WILDLIFE AREAS
DICKINSON COUNTY

NO.	DATE	REVISION

DRAWN BY: PROJECT NUMBER:
25-01-30-05

CHK'D BY: DATE:
May 19, 2026

SHEET NO:
D.15

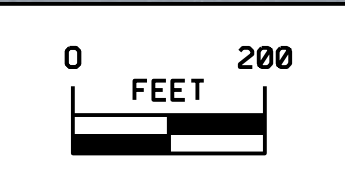


700 SF Rock Parking Lot
Blade and shape
2" Class A Roadstone

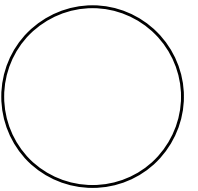
500 SF PCC Parking Lot
Paint 1 Van accessible and 1 car HC stall with 5' aisle between

2,300 SF Rock Parking Lot
Blade and shape
2" Class A Roadstone

3000 Stationing - 2 Transverse Joint Slurry Leveling, Clean and fill cracks, Single chip seal
3100 Stationing - Clean and fill cracks, Single chip seal



CONSULTANT:



**IOWA DEPARTMENT OF
NATURAL RESOURCES**

ENGINEERING SERVICES - CENTRAL OFFICE
6200 PARK AVE, STE 200, DES MOINES, IA 50321



PIKES POINT STATE PARK SITE PLAN

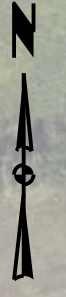
ROAD MAINTENANCE FOR:
DICKINSON COUNTY STATE PARKS AND WILDLIFE AREAS
DICKINSON COUNTY

NO.	BY	REVISION

DRAWN BY: PROJECT NUMBER:
25-01-30-05

CHK'D BY: DATE:
May 19, 2026

SHEET NO:
D.18

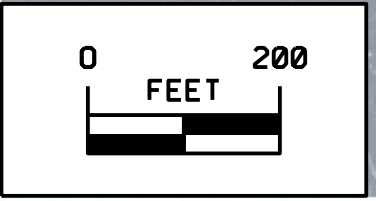


2,000 SF Rock Parking Lot
Blade and shape, 2" Class A Roadstone

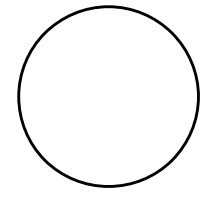
3200 Stationing - Blade and shape, 2" Class A Roadstone
3300 Stationing - Blade and shape, 2" Class A Roadstone

Lake Shore Dr

3202+00
3201+00
3300+00
3200+00



CONSULTANT:



**IOWA DEPARTMENT OF
NATURAL RESOURCES**
ENGINEERING SERVICES - CENTRAL OFFICE
6200 PARK AVE, STE 200, DES MOINES, IA 50321



PIKES POINT STATE PARK SITE PLAN

ROAD MAINTENANCE FOR:
DICKINSON COUNTY STATE PARKS AND WILDLIFE AREAS
DICKINSON COUNTY

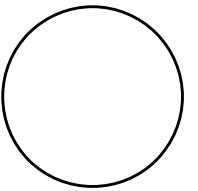
NO.	BY	REVISION

DRAWN BY: PROJECT NUMBER:
25-01-30-05
CHK'D BY: DATE:
May 19, 2026
SHEET NO:

D.19



CONSULTANT:



IOWA DEPARTMENT OF NATURAL RESOURCES

ENGINEERING SERVICES - CENTRAL OFFICE
6200 PARK AVE, STE 200, DES MOINES, IA 50321



TEMPLAR SRA SITE PLAN

ROAD MAINTENANCE FOR:

DICKINSON COUNTY STATE PARKS AND WILDLIFE AREAS

DICKINSON COUNTY

NO.	BY	REVISION

DRAWN BY: PROJECT NUMBER:
25-01-30-05

CHK'D BY: DATE:
May 19, 2026

SHEET NO:
D.21